

STORM DRAINAGE PIPE SCHEDULE

PIPE	MATERIAL	SIZE	LENGTH	INV. IN ELEV.	INV. OUT ELEV.	SLOPE	UPSTREAM STRUCTURE	DOWNSTREAM STRUCTURE
P1	HDPE	36"	80 LF	2694.0	2691.6	3.0%	S1A	S1B
P2	HDPE	36"	66 LF	2691.4	2689.0	3.6%	S1B	S1C
P3	HDPE	36"	40 LF	2688.8	2676.5	30.8%	S1C	HW2
P4	HDPE	15"	59 LF	2752.2	2751.4	1.4%	S2	S3
P5	HDPE	15"	59 LF	2751.2	2750.2	1.7%	S3	S4
P6	HDPE	15"	78 LF	2750.0	2738.5	14.7%	S4	HW7
P7	HDPE	18"	47 LF	±2748.0	2737.5	24.4%	EX CB	S5
P8	HDPE	18"	67 LF	2737.3	2734.5	4.2%	S5	HW8
P9	HDPE	36"	72 LF	2732.5	2721.0	15.9%	HW9	HW10
P10 ²	HDPE	30"	55 LF	2746.8	2734.0	23.4%	FES1	HW11

- STORM DRAINAGE PIPE NOTES:**
- HDPE IS ADS N-12 WT AASHTO M254/ASTM F2306, AASHTO M252, OR APPROVED EQUAL.
 - KEY PIPE P10 (ONLY) INTO SLOPE, PER THE DETAIL, SHEET C-507. FES1 AT THE INLET OF PIPE P10 IS ADS, COMPATIBLE WITH N-12 PIPING, OR APPROVED EQUAL. INSTALL PER THE MANUFACTURER'S RECOMMENDATIONS. DO NOT ALLOW WATER TO RUN UNDERNEATH F.E.S.

STORM DRAINAGE STRUCTURE SCHEDULE

DRAINAGE STRUCTURE	TYPE	STRUCTURE I.D. DIMENSION	TRAFFIC LOADING REQUIRED	TOP ELEV.	INV. ELEV. IN	INV. ELEV. OUT
S1A	OT	6' DIA	NO	2701.5	-	2694.0
S1B	FCB	6' DIA	NO	2698.0	2691.6	2691.4
S1C	JB	6' DIA	NO	2694.0	2689.0	2688.8
S2	FCB	2'-2"x 3'	YES	2755.7	-	2752.2
S3	FCB	2'-2"x 3'	YES	2755.7	2751.4	2751.2
S4	FCB	2'-2"x 3'	YES	2755.7	2750.2	2750.0
S5	JB	4' DIA	NO	2743.0	2737.5	2737.3

- STORM DRAINAGE STRUCTURE NOTES:**
- SEDIMENT PROTECTION REQUIRED AROUND EACH STRUCTURE IMMEDIATELY AFTER INSTALLATION OF STRUCTURE.
 - ENTRANCE TO BOXES SHALL BE ORIENTED DIRECTLY ABOVE STEPS.
 - STEPS PROVIDED IN ALL STRUCTURES HAVING 4' OR GREATER DEPTH.

NOTE:
STRUCTURES SPECIFIED TO HAVE FLAT JUNCTION BOX (FJB) TOP WILL BE THE SAME TOP AS YARD INLET WITHOUT THE OPEN THROAT OF THE YARD INLET

JUNCTION BOX TOP
CATCH BASIN SCHEDULE SYMBOL-(JB)
RIM = TOP OF COVER

SOLID TOP
CATCH BASIN SCHEDULE SYMBOL-(ST)
RIM = TOP OF COVER

FLAT CATCH BASIN TOP
CATCH BASIN SCHEDULE SYMBOL-(FCB)
RIM = TOP EDGE OF GRATE

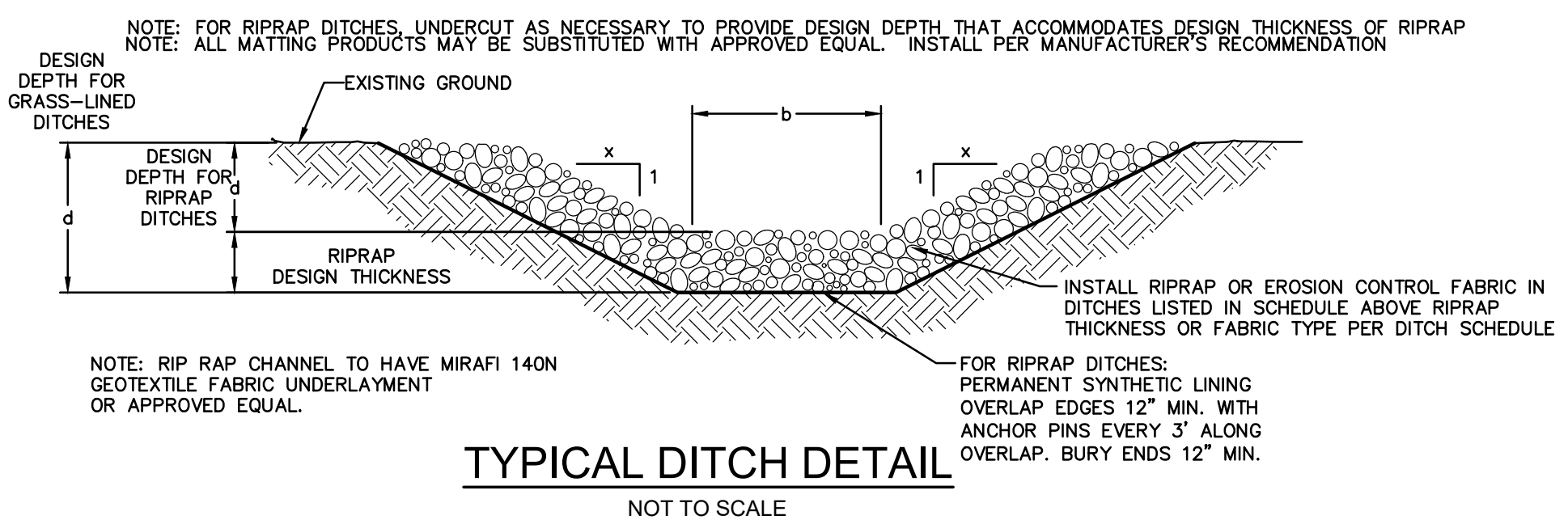
CATCH BASIN TOP
CATCH BASIN SCHEDULE SYMBOL-(CB)
RIM = TOP EDGE OF GRATE

CURB INLET TOP
CATCH BASIN SCHEDULE SYMBOL-(C)
RIM=TOP OF GRATE DIRECTLY UNDER HOOD OPENING

OPEN THROAT INLET TOP
CATCH BASIN SCHEDULE SYMBOL-(OT)
RIM=BOTTOM OF THROAT OPENING

YARD INLET TOP
CATCH BASIN SCHEDULE SYMBOL-(Y)
RIM = TOP OF GRATE

CATCH BASIN TOP DETAILS
NOT TO SCALE



DITCH SCHEDULE

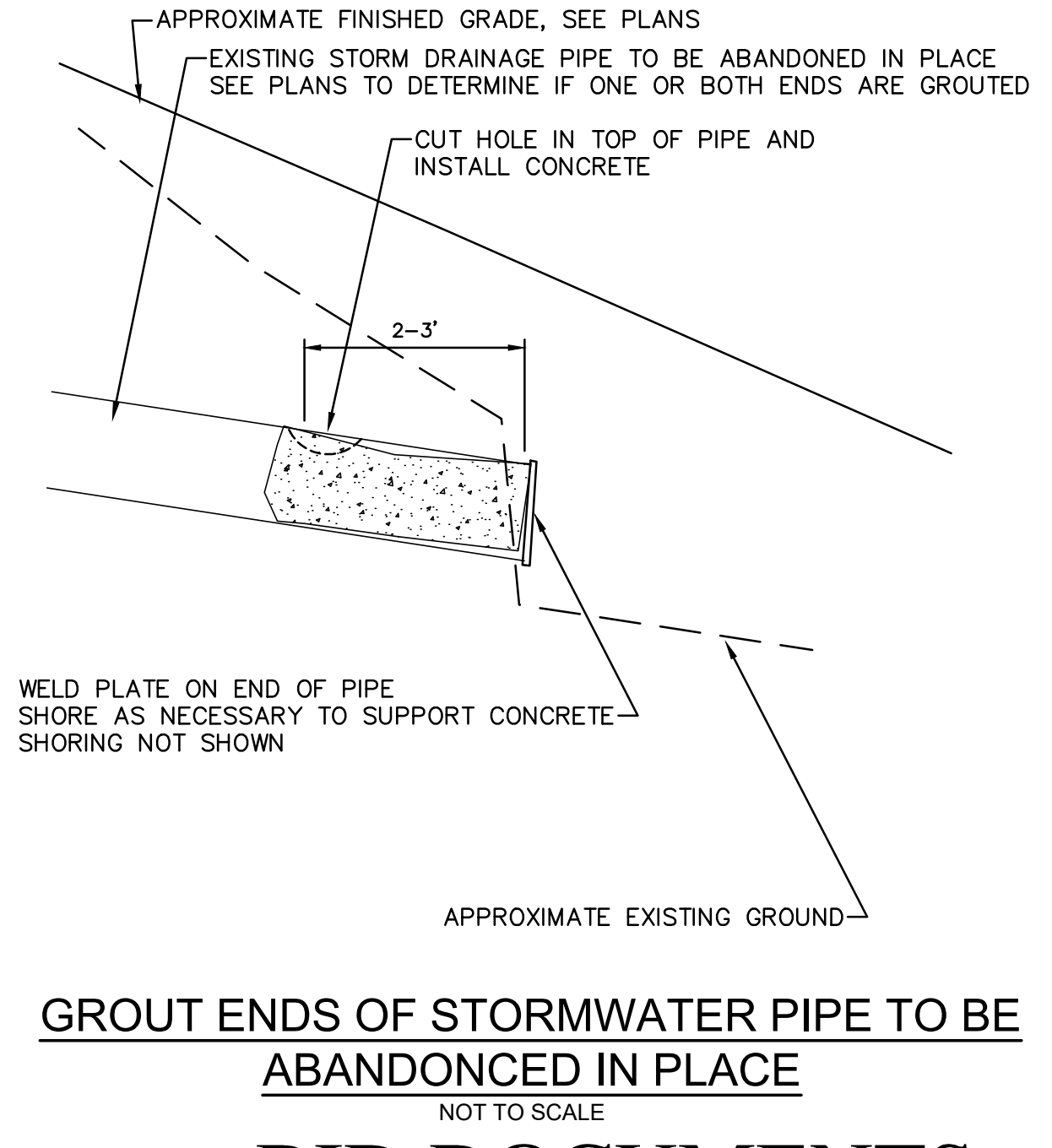
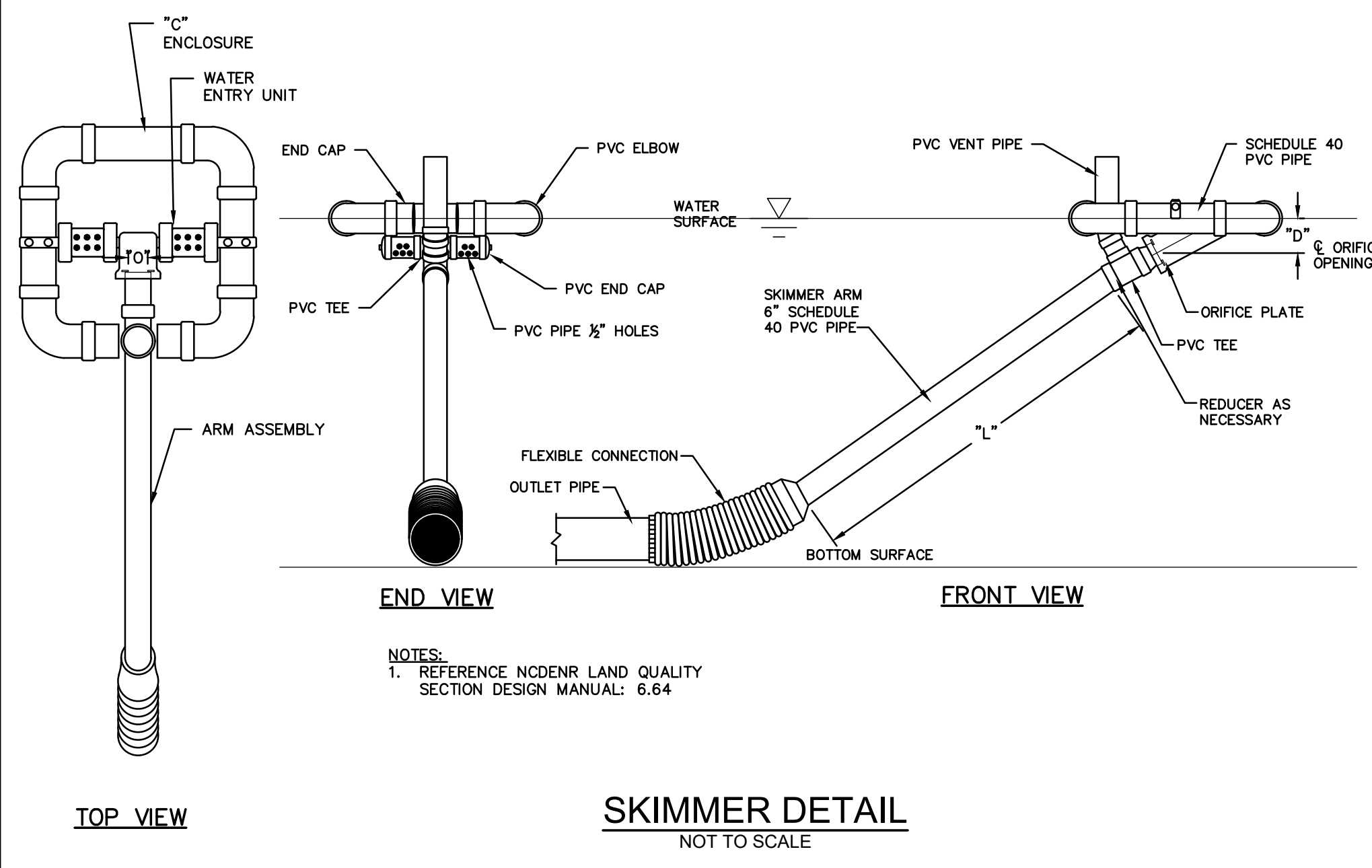
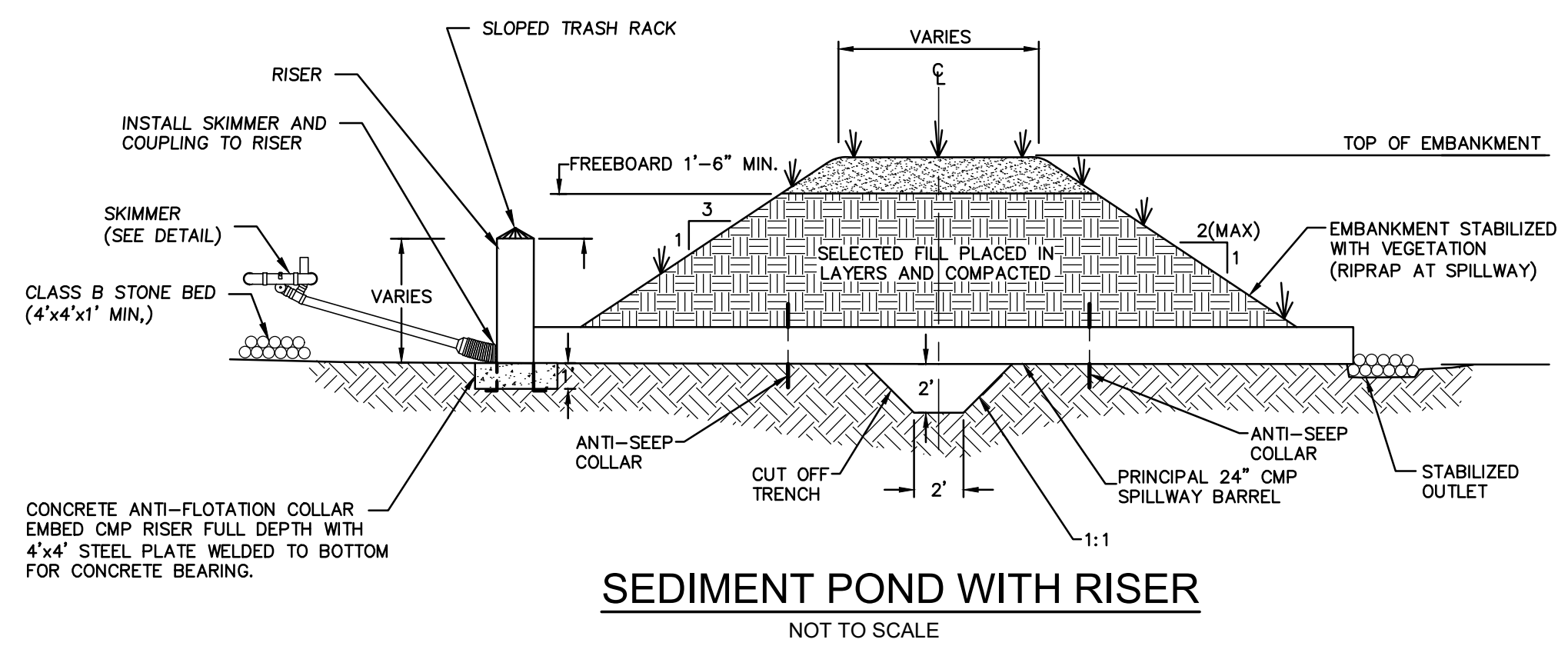
DITCH#	BOTTOM WIDTH (FEET)	DEPTH (FEET)	LEFT SIDE SLOPE	RIGHT SIDE SLOPE	DITCH SLOPE (%)	CHANNEL LINING ^a	RIPRAP SIZE, D ₉₀ (INCHES)	RIPRAP SIZE, D _{max} (INCHES) (1.5 X D ₉₀)	RIPRAP THICKNESS (INCHES) (1.5 X D _{max})
D1	5	1.5	3:1	3:1	9.0	GRASS W/NORTH AMERICAN GREEN SYNTHETIC LINER SC150	-	-	-
D1A	5	1.5	3:1	3:1	13.0	CL1 RIPRAP	8	12	18
D2	5	1	3:1	3:1	6.0	GRASS W/NORTH AMERICAN GREEN SYNTHETIC LINER SC150	-	-	-
D3	10	2	2:1	2:1	21.0	CL1 RIPRAP	10	15	23
D4	6	1	3:1	3:1	6.5	GRASS W/NORTH AMERICAN GREEN SYNTHETIC LINER S150	-	-	-
D5	4	2	2:1	2:1	25	GRASS W/NORTH AMERICAN GREEN SYNTHETIC LINER SC150	-	-	-
D5A	6	2	3:1	2:1	22.2	CL1 RIPRAP	9	14	20
D6	10	2	3:1	3:1	15.5	CL1 RIPRAP	9	14	20
D7	9	2	3:1	2:1	16.7	CL1 RIPRAP	9	14	20
D8	6	2	2:1	2:1	33.3	CL1 RIPRAP	9	14	20
D9	6	2	2:1	2:1	33.3	CL1 RIPRAP	9	14	20
D10	8	2	3:1	3:1	9.8	CL1 RIPRAP	9	14	20
D11	12	1.5	3:1	3:1	1.5	GRASS W/NORTH AMERICAN GREEN SYNTHETIC LINER SC150	-	-	-
D12	12	2.0	3:1	3:1	1.0	GRASS W/NORTH AMERICAN GREEN SYNTHETIC LINER S150	-	-	-
D13	3	1.5	3:1	3:1	1.0	GRASS W/NORTH AMERICAN GREEN SYNTHETIC LINER SC150	-	-	-
D14	4	2.0	2.5:1	2.5:1	4.0	GRASS W/NORTH AMERICAN GREEN SYNTHETIC LINER SC150	-	-	-
D15	4	2.0	2.5:1	2.5:1	4.0	GRASS W/NORTH AMERICAN GREEN SYNTHETIC LINER SC150	-	-	-

a. SC 150 ERONET, OR APPROVED EQUAL.
b. WIDTH VARIES, MINIMUM SHOWN, SEE GRADING PLAN.
c. DITCH SLOPE VARIES, SLOPE SHOWN IS CALCULATED AT LOCATION OF GREATEST FLOW IN DITCH.
d. DEPTH VARIES, MINIMUM SHOWN, SEE GRADING PLAN.
e. SIDE SLOPES VARY, STEEPEST SHOWN, SEE GRADING PLAN.

STORMWATER/SEDIMENT CONTROL POND SCHEDULE

Basin#	TOP BERM ELEV. (ft)	EMERGENCY SPILLWAY ELEV. (ft)	TOP OF RISER (ft)	EMERGENCY SPILLWAY (D x WIDTH)	BERM WIDTH (FT)	SBR RISER SIZE	SBB BARREL SIZE (inches)	BARREL INV. IN ELEV. (ft)	BARREL INV. OUT ELEV. (ft)	FLOTATION BLOCK DIMENSIONS (FT)	BASIN AVG. LENGTH (FT)	BASIN AVG. WIDTH (FT)	SKIMMER ORIFICE SIZE (IN)	SKIMMER INVERT ELEV. (FT)
1	2631.0	2629.5	2628.0	1.5'x15'	VARIABLES 8' MIN.	4'x4'	30"	2621.0	2619.0	4.5'x4.5'x3'	490'	80'	4.0"	2623.0
2	2631.0	2629.5	2628.0	1.5'x15'	VARIABLES 8' MIN.	4'x4'	30"	2621.0	2620.0	4'x4'x3.5'	440'	100'	4.5"	2622.0

- NOTES:**
- SEE ALSO POROUS BAFFLE DETAIL, SHEET C-504, FOR ADDITIONAL INFORMATION.
 - SEE STORM DRAINAGE PIPE SCHEDULE FOR ADDITIONAL REQUIREMENTS FOR THE SEDIMENT BASIN 1 BARREL PIPE.
- MAINTENANCE SCHEDULE FOR SKIMMER/SEDIMENT BASINS:**
- AT A MINIMUM, TEMPORARY SEDIMENT/SKIMMER BASIN SHALL BE INSPECTED WEEKLY AND AFTER EACH RAINFALL EVENT GREATER THAN 1/2-INCH.
 - REMOVE SEDIMENT AND RESTORE BASIN TO ITS ORIGINAL DIMENSIONS WHEN THE SEDIMENT HAS ACCUMULATED TO ONE-HALF THE DESIGN DEPTH OF THE TRAP.
 - PLACE THE SEDIMENT THAT IS REMOVED IN A DESIGNATED DISPOSAL AREA.
 - CONTRACTOR SHALL BE RESPONSIBLE FOR MAINTAINING ACCESS WITHIN LIMITS OF DISTURBED AREA TO ALL SKIMMER/SEDIMENT BASINS FOR MAINTENANCE DURING CONSTRUCTION AND REMOVAL UPON PROJECT COMPLETION.
- NOTE:**
- SEE BAFFLE DETAIL FOR BAFFLE INSTALLATION PROCEDURE AND SPACING.



BID DOCUMENTS

mcgill
155 Broad Street
Asheville, NC 28801
828.252.0575
NC Firm License # C-0459
mcgillassociates.com

MARK D. CATHY
REGISTERED PROFESSIONAL ENGINEER
STATE OF NORTH CAROLINA
SEAL 024993

SIGNED AND DATED:

NO.	DATE	BY	DESCRIPTION

FRANCIS FARM LANDFILL
RESTRICTIVE COVER IMPLEMENTATION
HAYWOOD COUNTY
HAYWOOD COUNTY, NORTH CAROLINA

GRAPHIC SCALE
DIVISION VALUE = 40 FEET

OFFICE MANAGER	DESIGNER
MDC	DAP
PROJECT MANAGER	REVIEWER
JRB	JRB

DATE	PROJECT #	FUNDING #
DECEMBER 2019	14.00708	N/A

SHEET
C-503