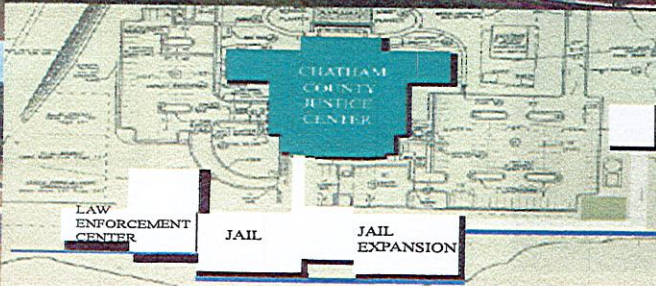
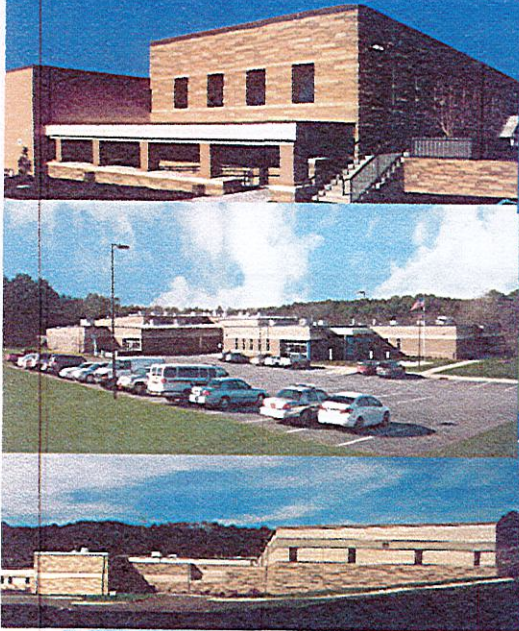
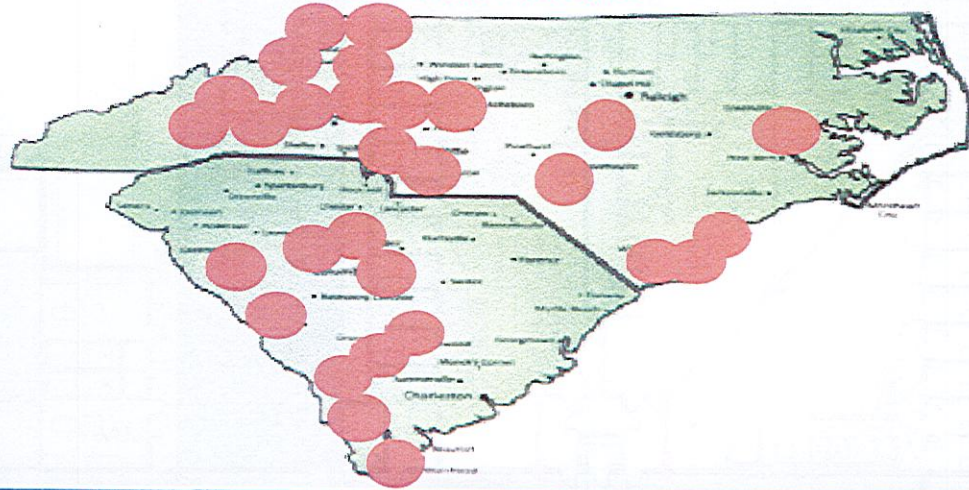
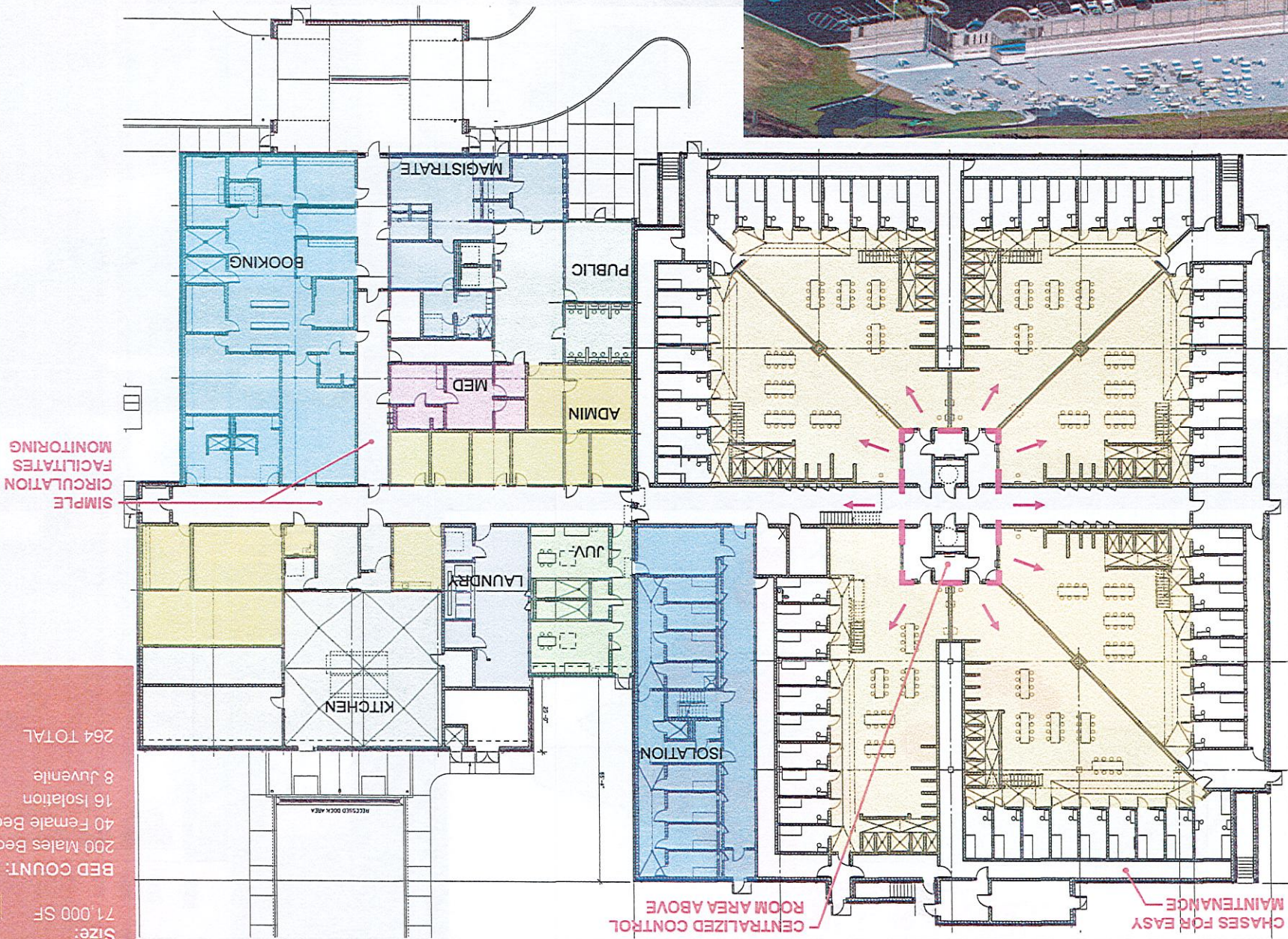


# HEMPHILL RANDEL DETENTION PROJECTS



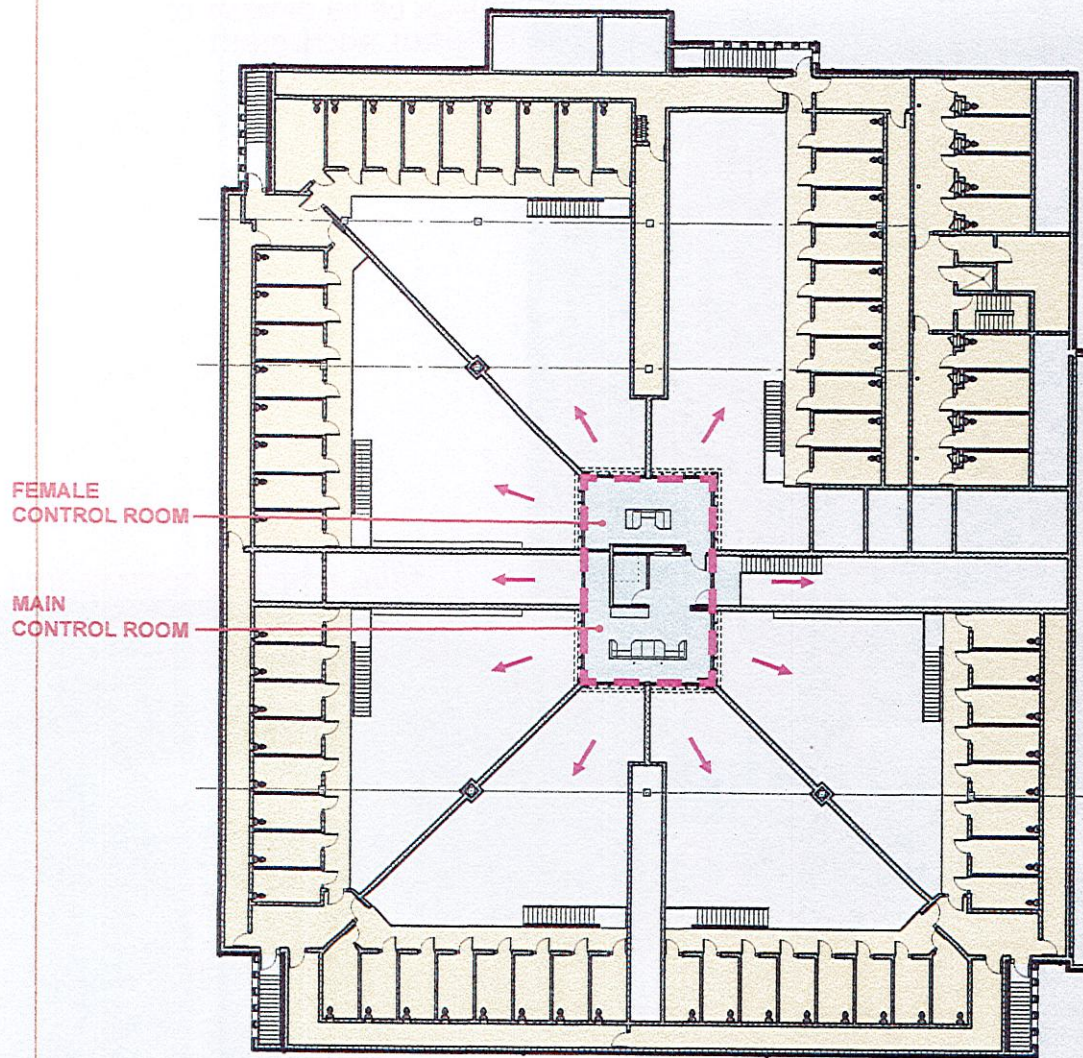


BURKE COUNTY JAIL



Size: 71,000 SF  
BED COUNT:  
200 Males Beds  
40 Female Beds  
16 Isolation  
8 Juvenile  
264 TOTAL





MAIN CONTROL ROOM

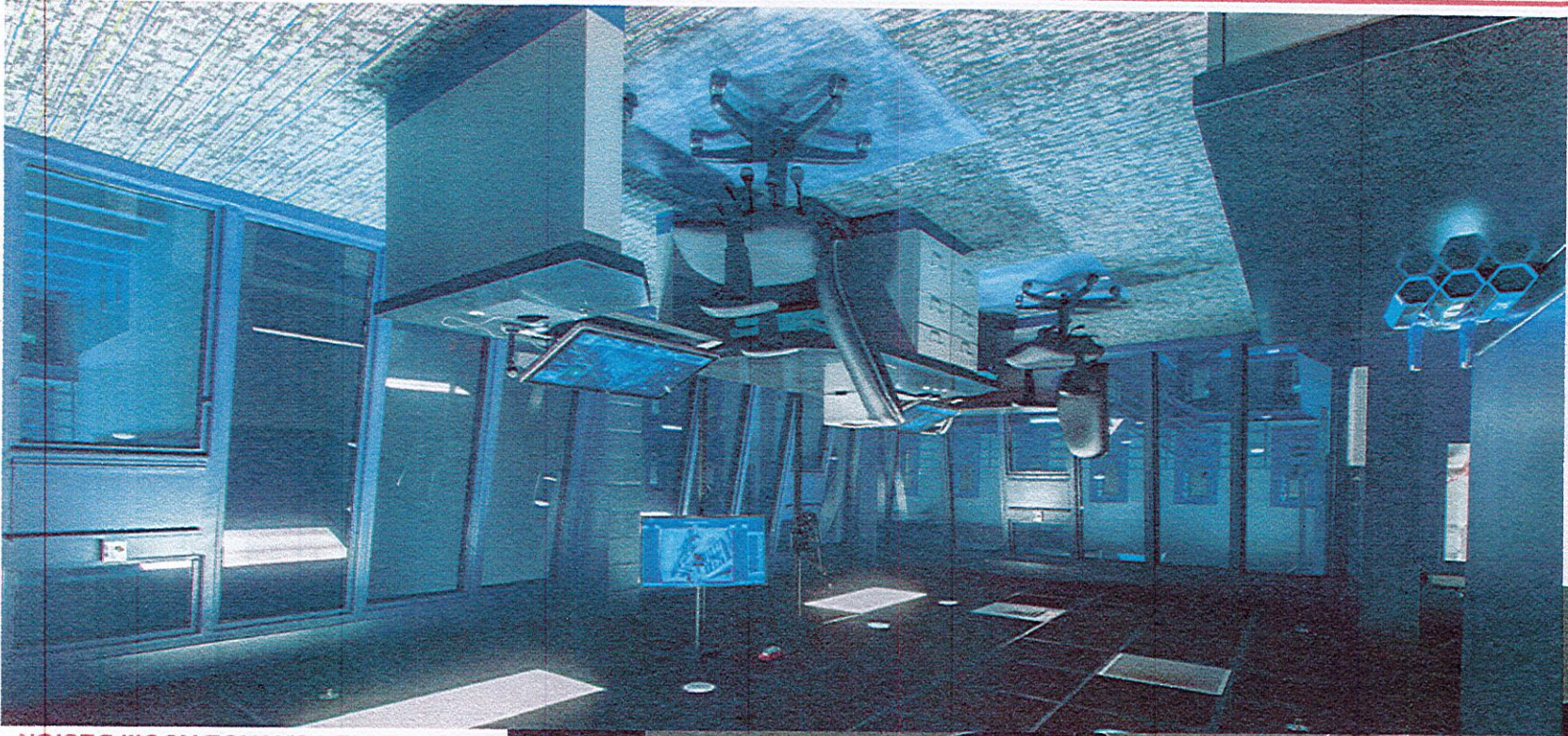


CONTROL ROOM VIEW

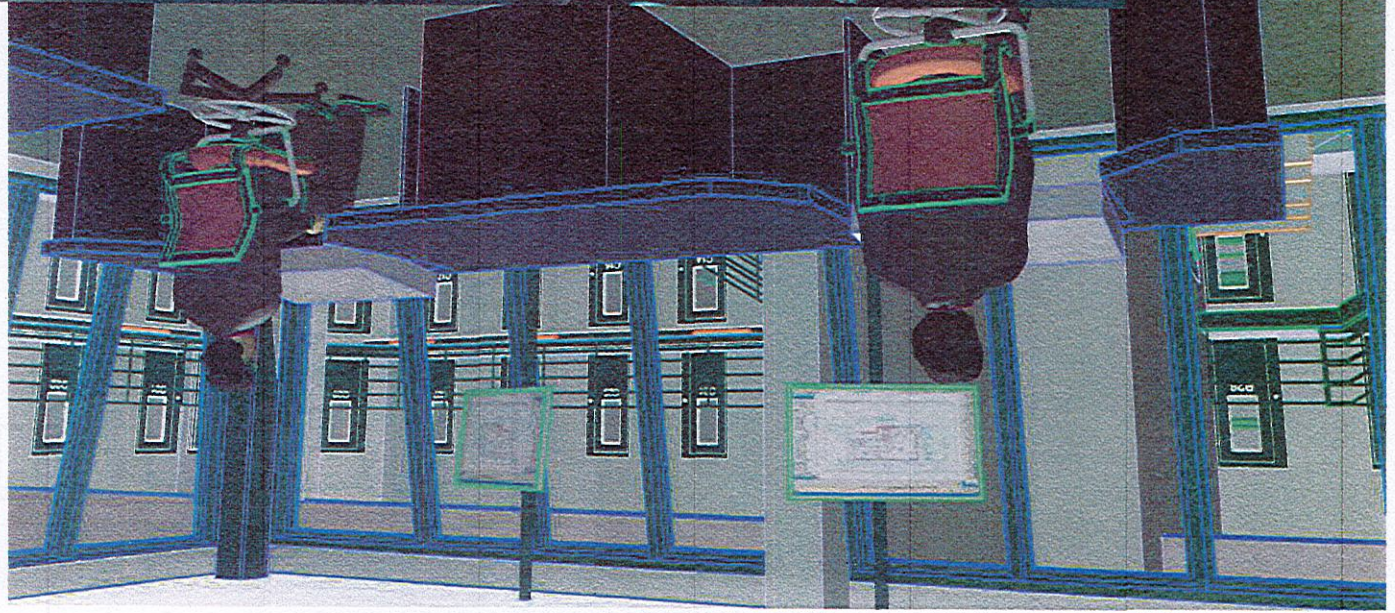
**BURKE COUNTY JAIL**

**HEMPHILL - RANDEL ASSOCIATES**





FINAL CONTROL ROOM DESIGN



DESIGN DEVELOPMENT OF CONTROL ROOM SIGHT LINES

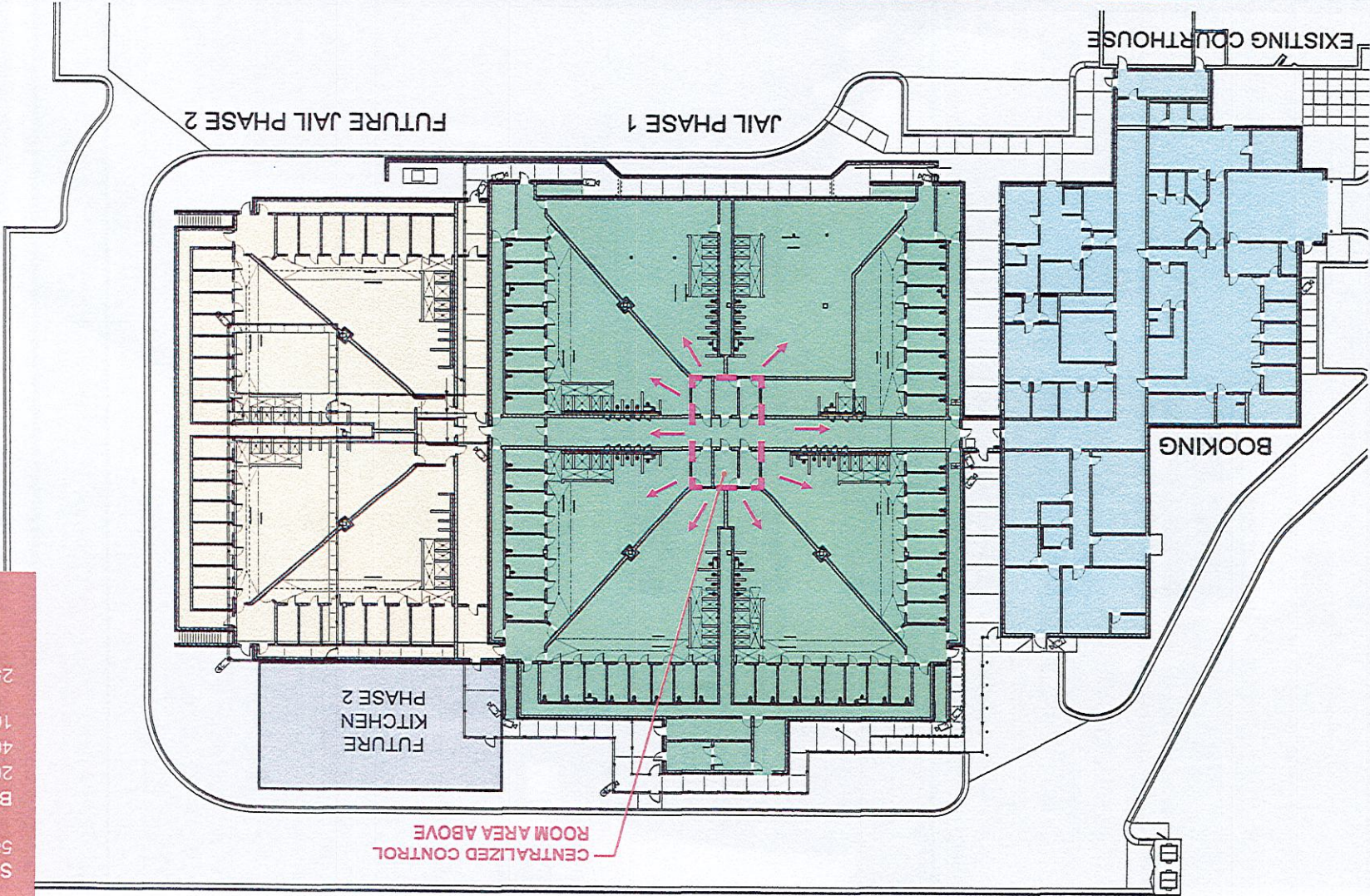




CONTROL ROOM VIEW

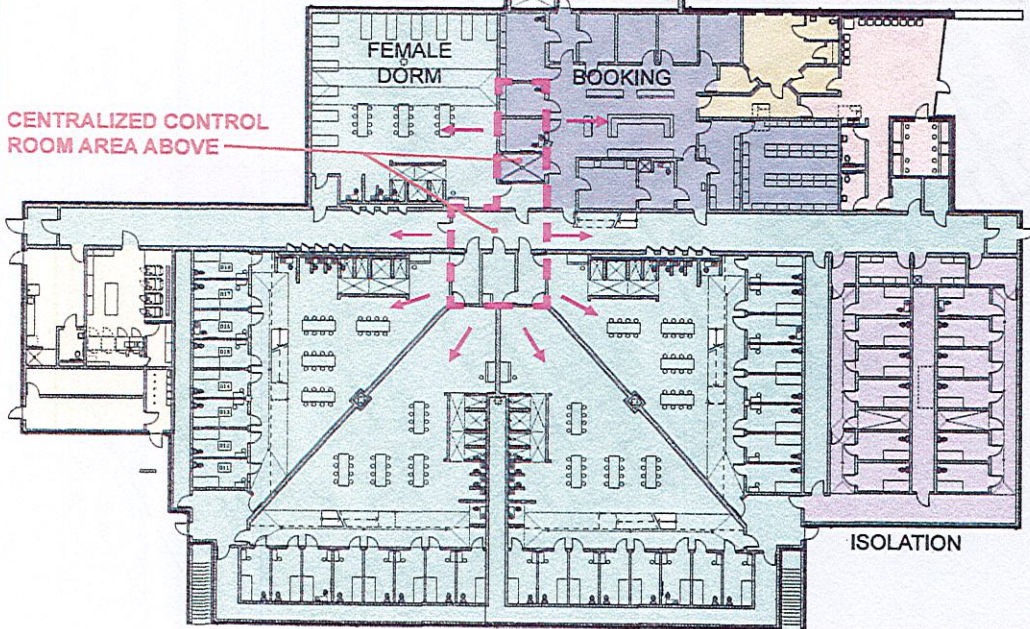
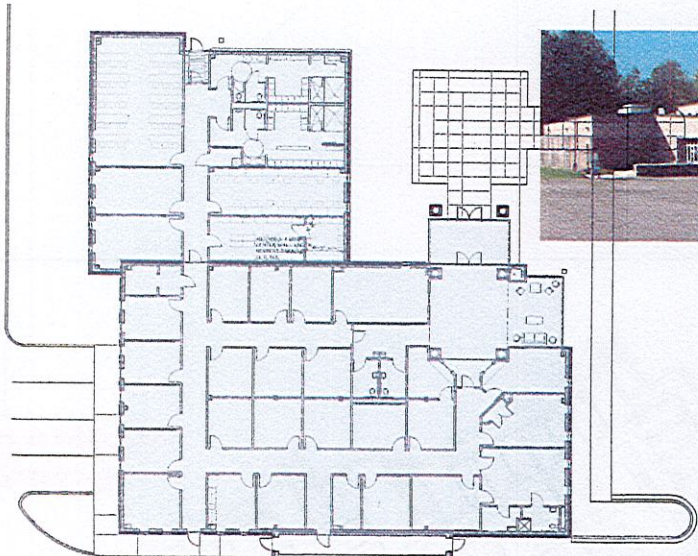


WILKES COUNTY JAIL



Size: 58,100 SF  
BED COUNT: 200 Males Beds  
40 Female Beds  
16 Isolation  
256 TOTAL





**DETENTION CENTER SIZE:**  
40,400 SF

**BED COUNT:**  
128 Males Beds  
24 Female Beds  
12 Isolation

164 TOTAL

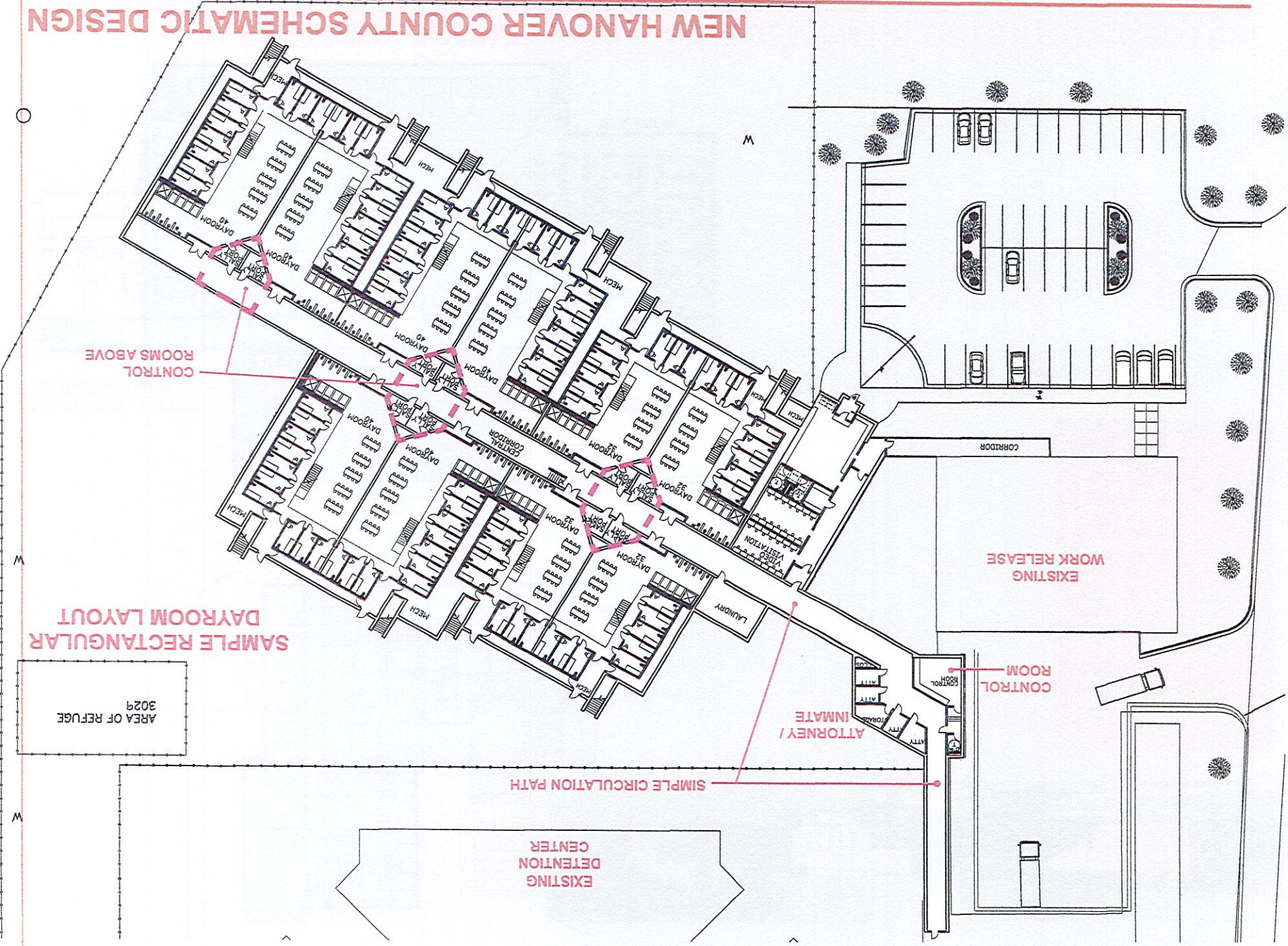
**LAW ENFORCEMENT CENTER SIZE:**  
11,000 SF

# ALEXANDER COUNTY LAW ENFORCEMENT & DETENTION CENTER

HEMPHILL - RANDEL ASSOCIATES



NEW HANOVER COUNTY SCHEMATIC DESIGN



CONTROL ROOMS ABOVE

SAMPLE RECTANGULAR DAYROOM LAYOUT

AREA OF REFUGE 3029

SIMPLE CIRCULATION PATH

EXISTING DETENTION CENTER

ATTORNEY / INMATE

CONTROL ROOM

EXISTING WORK RELEASE

CORRIDOR

W

W

W



# SAMPLE DETENTION CENTER PROJECTS

Project	Square Feet	Master Planned for	No. of Beds	Bid Cost	Budget	Cost per Bed	Cost per SF	Date
Burke County Jail	71,000 SF	408 beds	264 beds	\$21,800,000	\$21,800,000	\$82,576	\$307	2018
Chatham	64,150 SF	320 beds	160 beds	\$13,600,000	\$13,600,000	\$85,000	\$212	2015
Wilkes	58,100 SF	384 beds	256 beds	\$11,000,000	\$11,000,000	\$42,969	\$189	2014
Alexander	51,400 SF	324 beds	164 beds	\$8,770,000	\$10,440,000	\$53,476	\$171	2012
Ashe	63,800 SF	204 beds	165 beds	\$12,600,000	\$12,400,000	\$76,364	\$197	2009
Brunswick County Law Enforcement & Detention Center	107,900 SF	666 beds	444 beds	\$19,200,000	\$19,500,000	\$43,243	\$178	2008



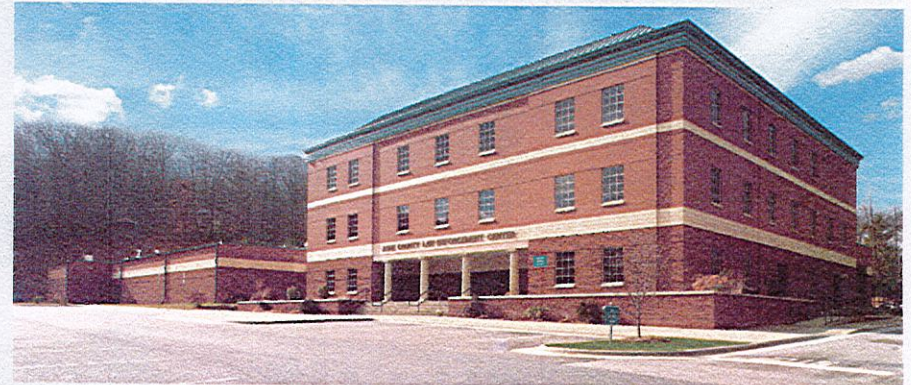
WATAUGA COUNTY JAIL & LAW ENFORCEMENT CENTER



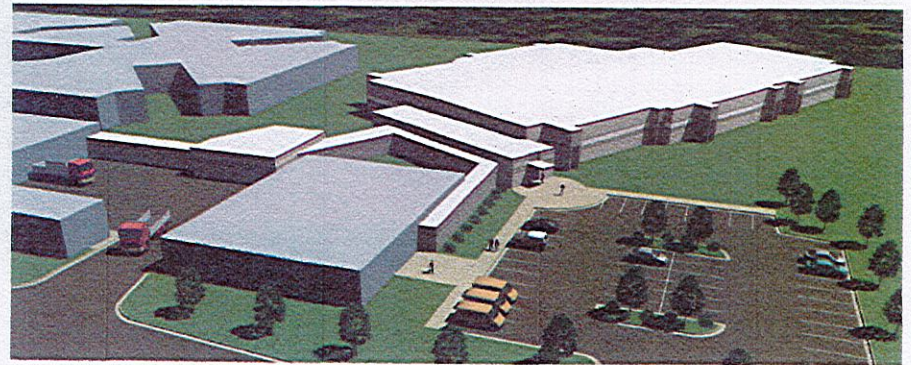
BRUNSWICK COUNTY JAIL & LAW ENFORCEMENT CENTER



ALEXANDER COUNTY JAIL & LAW ENFORCEMENT CENTER



ASHE COUNTY JAIL & LAW ENFORCEMENT CENTER



NEW HANOVER COUNTY JAIL EXPANSION



BRUNSWICK COUNTY CAMPUS



193,400 SF	TOTAL AREA
21,800 SF	MECHANICAL RENOVATIONS
15,500 SF	HEALTH BUILDING
15,000 SF	D.S.S. BUILDING ADDITION
35,400 SF	AND RENOVATION
47,750 SF	KITCHEN / CAFE EXPANSION
43,350 SF	ADMINISTRATION BUILDING
14,600 SF	DETENTION CENTER PHASE 2
	DETENTION CENTER PHASE 1
	LAW ENFORCEMENT CENTER



## HRA REPEAT WORK CLIENTELE

### ALLEGHANY COUNTY

LAW ENFORCEMENT & DETENTION CENTER  
ALLEGHANY COUNTY GROUP HOMES  
HEALTH DEPARTMENT  
ADMINISTRATION BUILDING  
HISTORIC COURTHOUSE RENOVATIONS  
COMMUNITY COLLEGE & BUSINESS INCUBATOR  
ALLEGHANY COUNTY LIBRARY  
COURTROOM #2  
COURTHOUSE EARTHQUAKE REPAIRS  
+ HALF DOZEN BUILDING STUDIES / EVALUATIONS



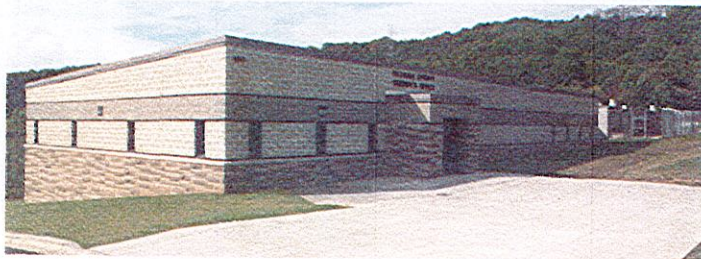
### WATAUGA COUNTY

LAW ENFORCEMENT & DETENTION CENTER  
911 CALL CENTER  
COURTHOUSE EXPANSION & MAIN COURTROOM RENOVATION  
COURTROOM #2 INTERIOR RENOVATIONS

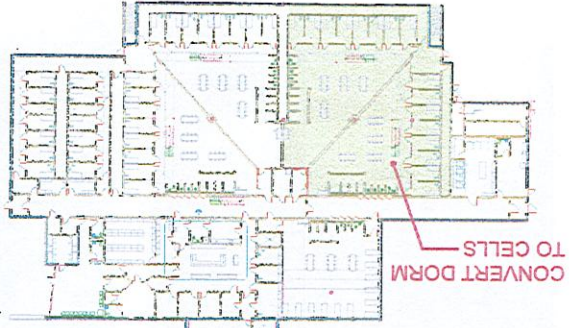


### CITY OF CHARLOTTE FIRE DEPARTMENT

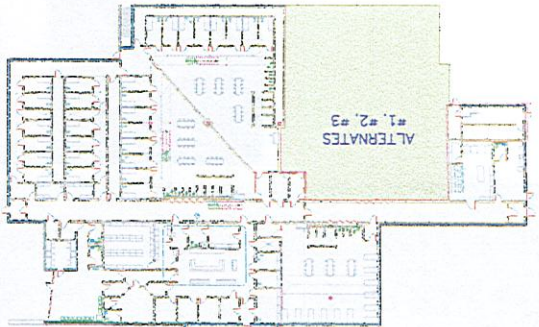
FIRE STATION #29  
FIRE STATION #32  
FIRE STATION #35  
FIRE STATION #36  
FIRE STATION #32 ADDITION  
FIRE STATION #33 ADDITION



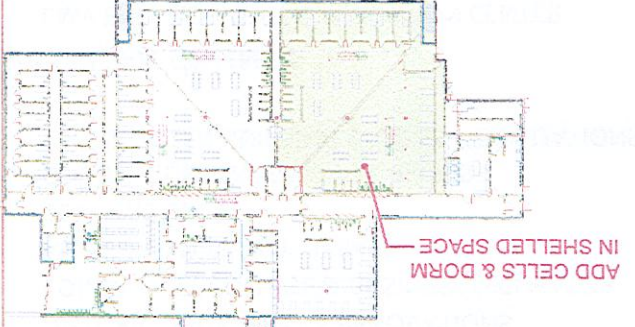




ALTERNATE #3  
\$160,000

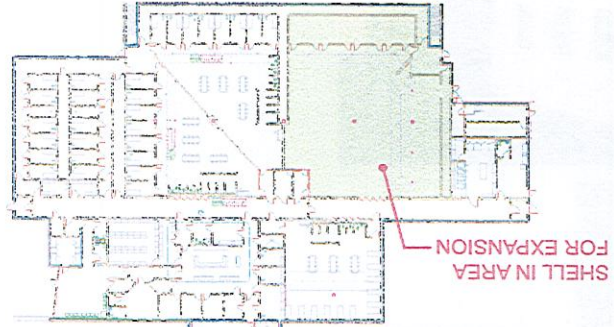


ALTERNATE #4  
\$550,000

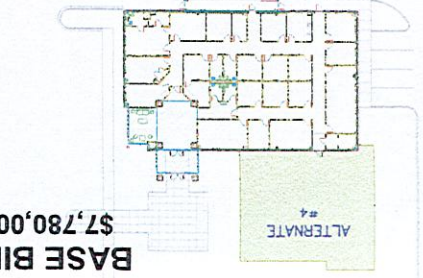


ALTERNATE #2  
\$1,140,000

ALEXANDER COUNTY  
REMOTE SITE  
OPTIONS & COSTS  
TOTAL BUDGET  
\$10,440,000



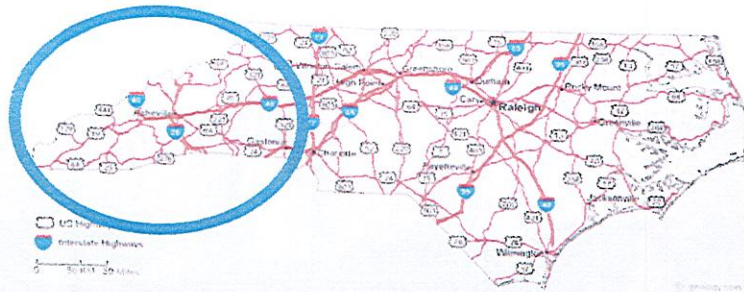
ALTERNATE #1  
\$810,000



BASE BID  
\$7,780,000



- Founded in 2000
- Principals all native to WNC
- Headquartered in Asheville
- Waynesville Branch Office
- Over 2,500 projects completed

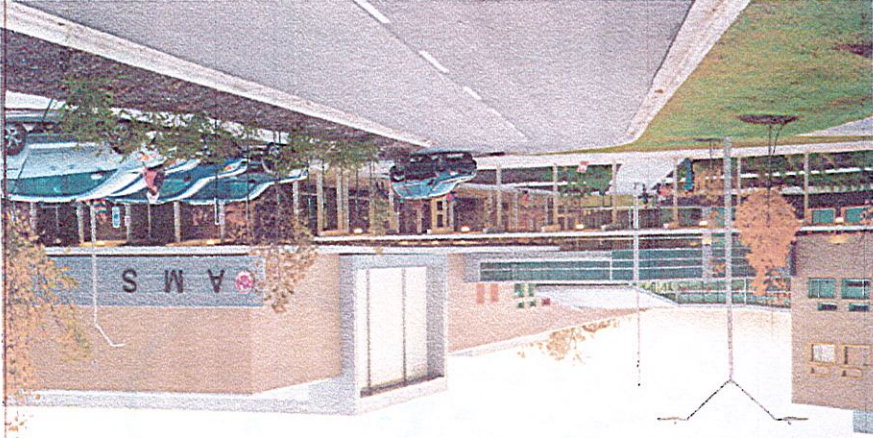


HEMPHILL – RANDEL ASSOCIATES



# HEMPHILL – RANDEL ASSOCIATES

Built a school around a school



Asheville Middle School - Expansion







Local Project Experience



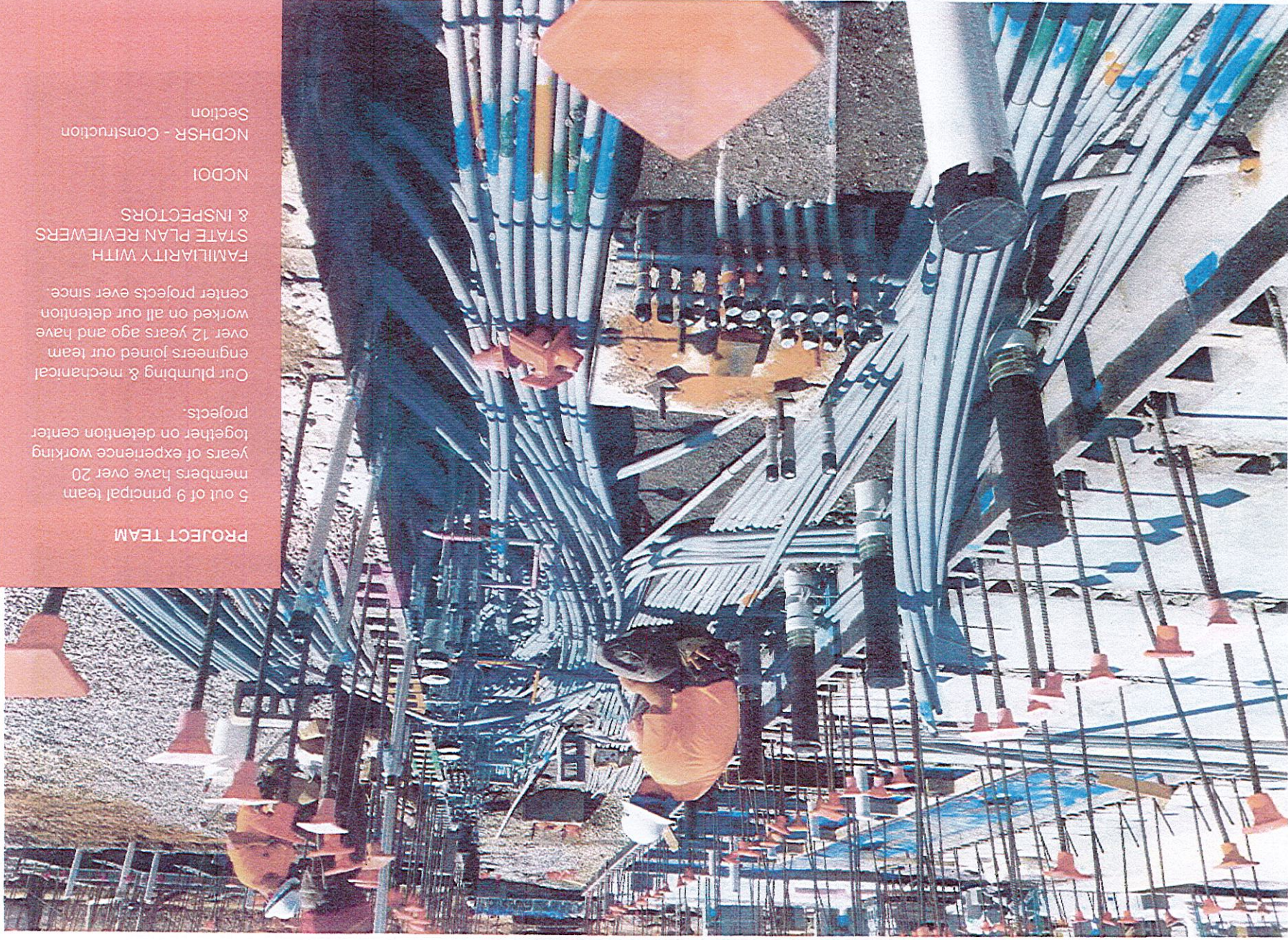
Site Security / Lighting

---

HEMPHILL – RANDEL ASSOCIATES

HEMPHILL – RANDEL ASSOCIATES





PROJECT TEAM

5 out of 9 principal team members have over 20 years of experience working together on detention center projects.

Our plumbing & mechanical engineers joined our team over 12 years ago and have worked on all our detention center projects ever since.

FAMILIARITY WITH STATE PLAN REVIEWERS & INSPECTORS

NCDOT

NCDHSR - Construction Section





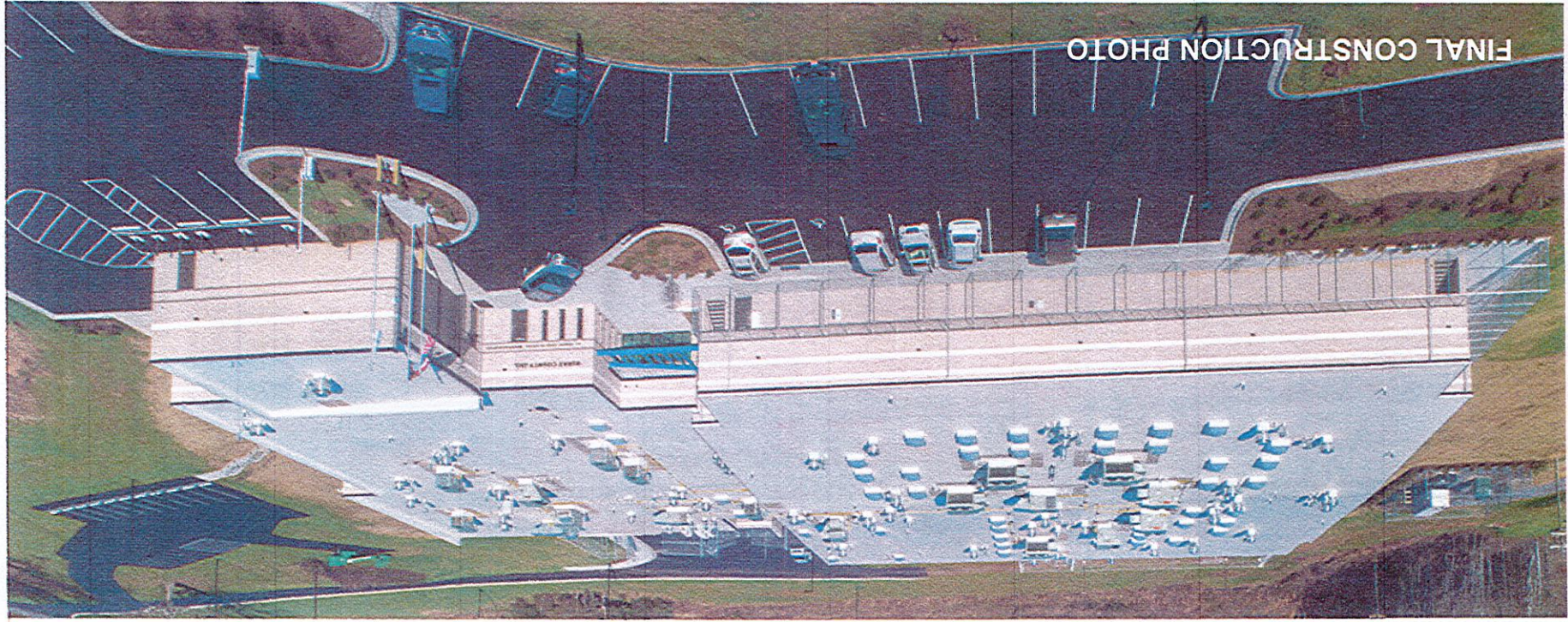
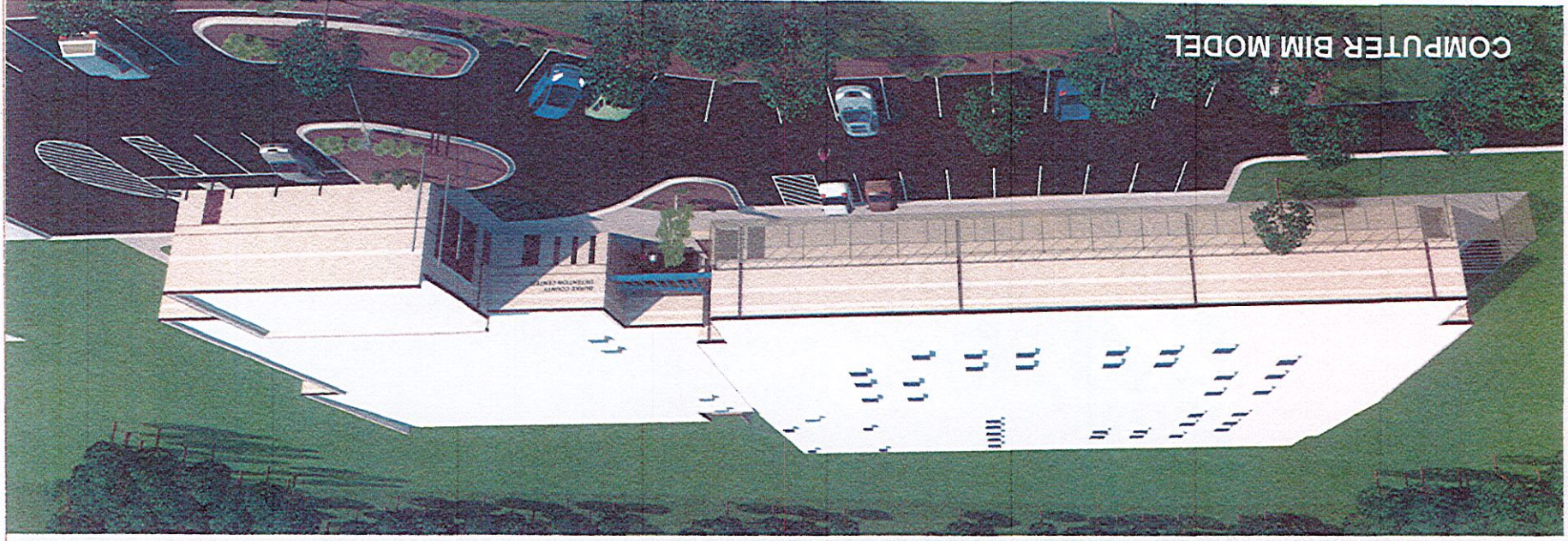
Use local materials and labor to greatest extent possible to benefit local economy.

Reinforced masonry construction with precast concrete floor and roof panels historically more budget friendly.

Security walls in masonry construction are strategically planned, reinforced and grouted solid full height.

Typically precast concrete cells and prefabricated steel cells add about 15% to the project budget.









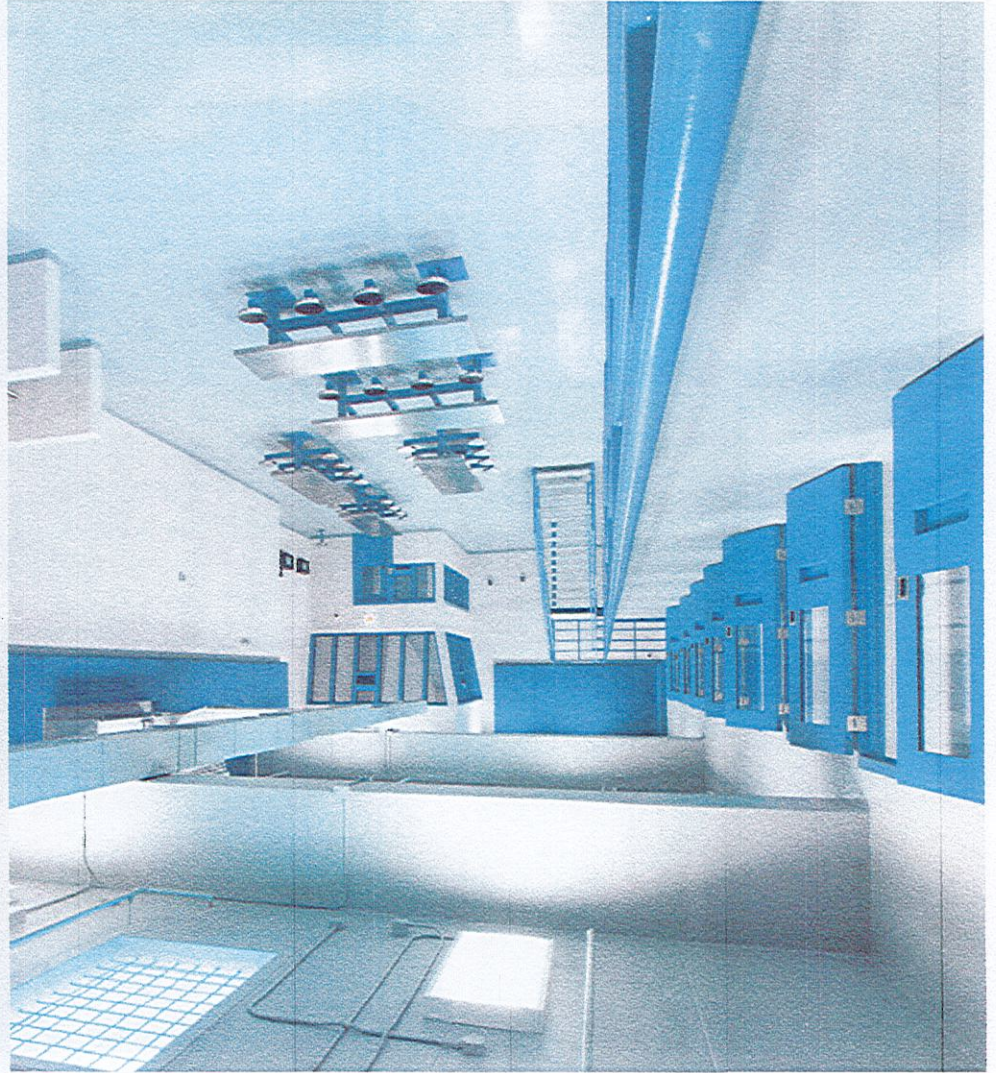
COMPUTER BIM MODEL



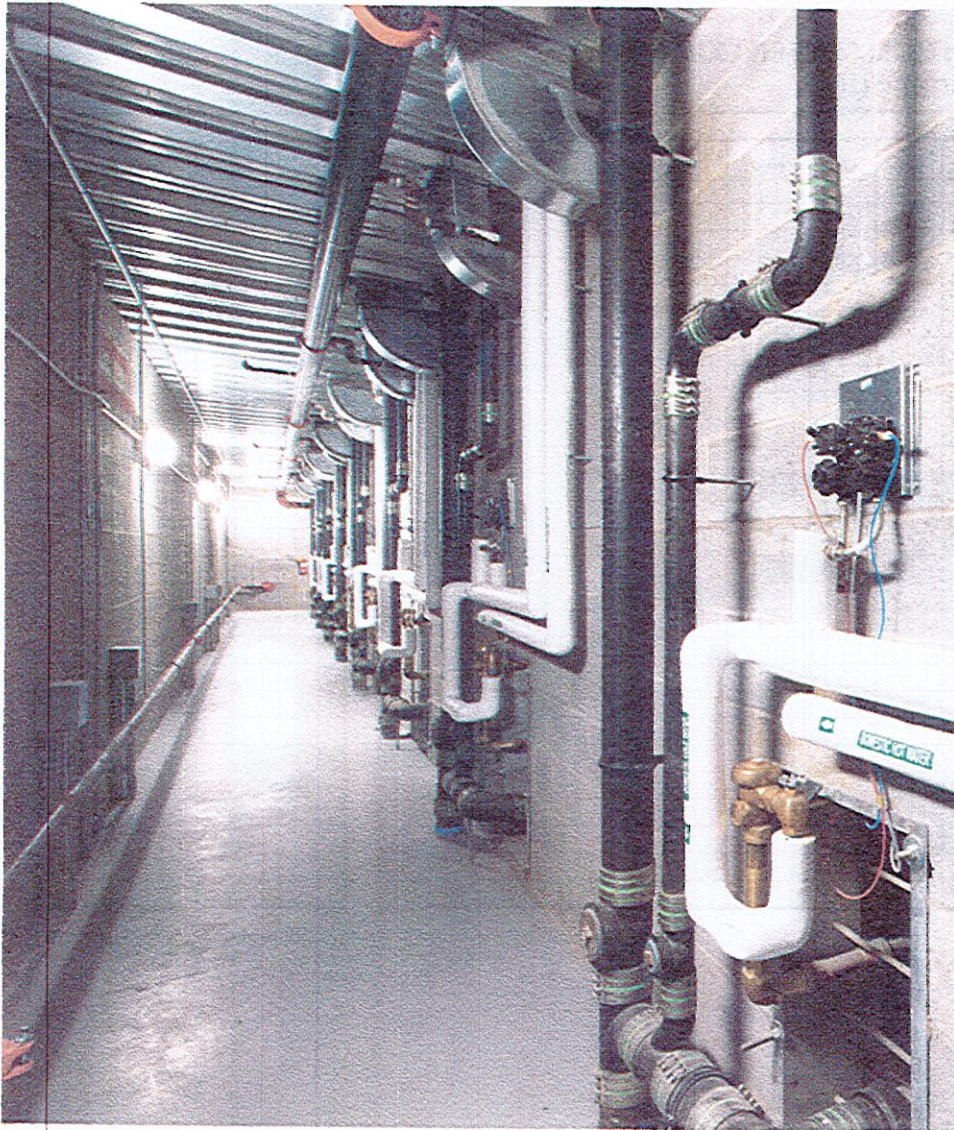
FINAL CONSTRUCTION PHOTO



- SAFE ENVIRONMENT & EASY TO MAINTAIN FINISHES
- CONTROL ROOM HAS UNOBSTRUCTED VIEW OF ENTIRE DAYROOM
- ANTI-MICROBIAL EPOXY WALL AND FLOOR COATINGS AT SHOWER AREA
- ENERGY EFFICIENT, DETENTION GRADE LED LIGHTING FIXTURES
- 4'-0" HIGH GUARD RAILS
- SOUND ABSORBING WALL PANELS FOR ACOUSTICAL COMFORT
- SLIP RESISTANT EPOXY FLOOR COATING







#### TYPICAL CHASE BEHIND CELLS

- EASY MAINTENANCE ACCESS
- MINIMIZES INMATE INTERACTION W/ MAINTENANCE PERSONNEL
- FACILITATES REGULAR MAINTENANCE
- PROVIDES ADDITIONAL LEVEL OF SECURITY

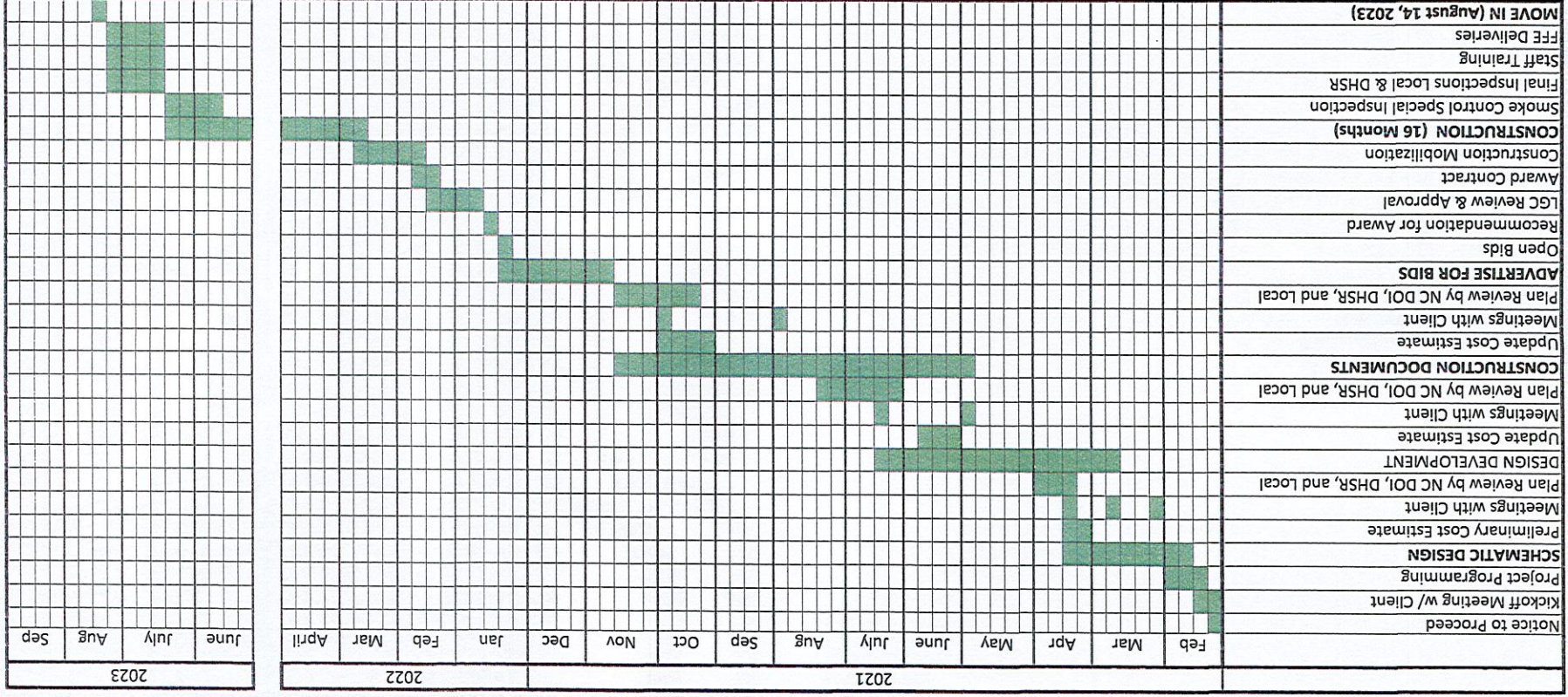


#### TYPICAL CELL DESIGN

- LIGATURE RESISTANT BUNK DESIGN
- LIGATURE RESISTANT GRAB BARS
- FLAT SURFACE SPRINKLER HEAD
- SMOKE DETECTOR CONCEALED IN EXHAUST
- CELL IN SLIGHTLY NEGATIVE PRESSURE & 100% EXHAUSTED TO THE OUTSIDE - HELPS REDUCE VIRUS SPREAD

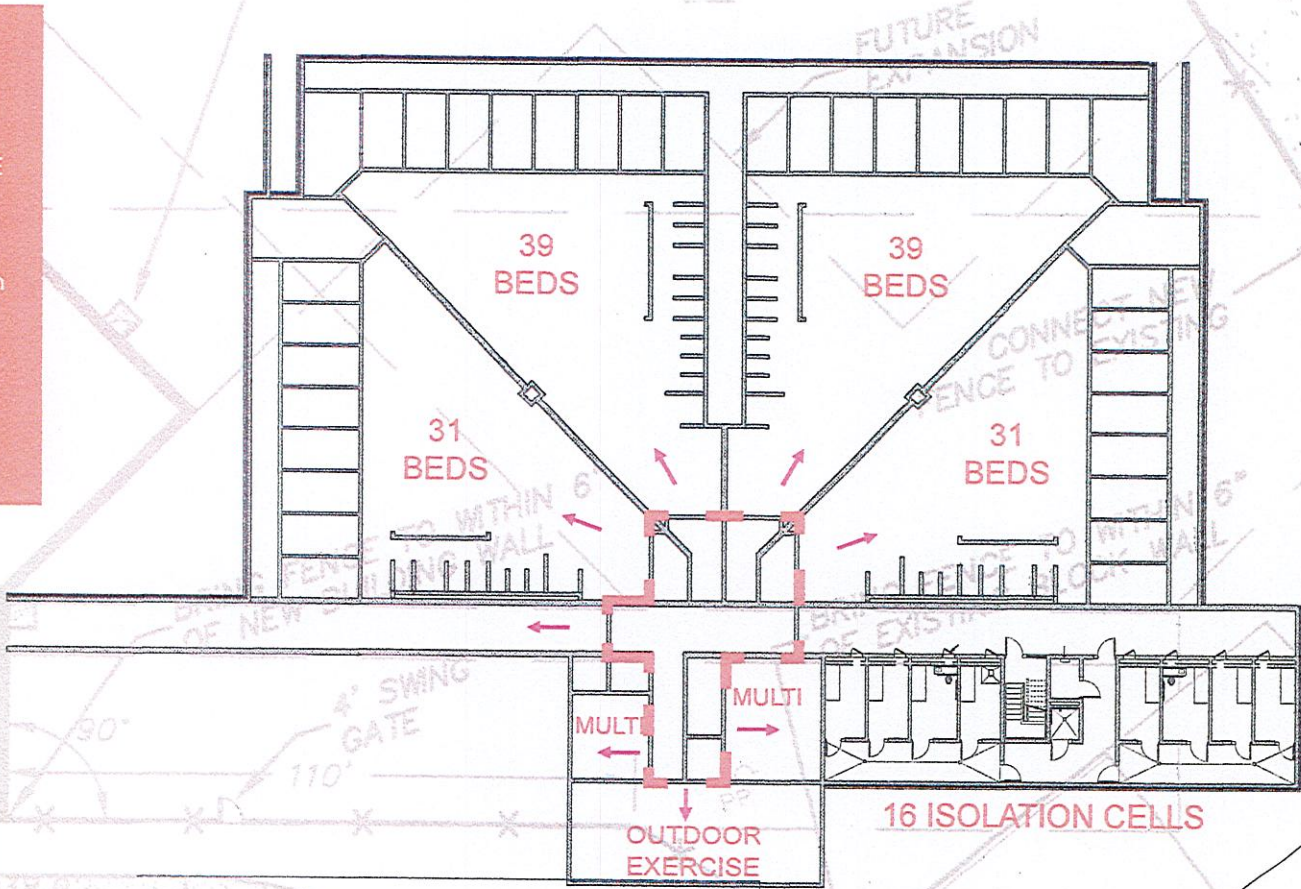


HAYWOOD COUNTY DETENTION CENTER EXPANSION  
SAMPLE SCHEDULE





**DETENTION CENTER SIZE:**  
 31,600 SF  
  
**OUTDOOR EXERCISE**  
 780 SF  
  
**BED COUNT:**  
 140 General Population  
 16 Isolation  
  
**156 TOTAL**



**EXPERIMENTAL HAYWOOD COUNTY DETENTION CENTER EXPANSION**

**HEMPHILL - RANDEL ASSOCIATES**



