



# JONATHAN CREEK SITE

ASHEVILLE METRO AREA, NORTH CAROLINA



## PUBLICALLY OWNED ECONOMIC DEVELOPMENT OPPORTUNITY

- 22 Acre Flat Site
- 16 Acre Graded Pad
- Pad Ready Site
- On-Site Power, Water, Sewer
- Planned Industrial Use
- 5 Min to Waynesville
- 30 Min to Asheville
- US-276 Frontage / 4 Mins to I-40
- Interstates I-26 & I-81 within 40 Min drive
- County-Owned for Economic Development

### PLEASE CONTACT US

CLARK DUNCAN | Senior Vice President of Economic Development  
828.258.6134, [cduncan@ashevillechamber.org](mailto:cduncan@ashevillechamber.org)

RYAN REGAN | Director of Business Development  
828.258.6130, [rregan@ashevillechamber.org](mailto:rregan@ashevillechamber.org)

Site Description: : The 22-acre commercial/industrial site is located in one of Haywood County's most scenic valleys near the Great Smoky Mountains National Park. The community is known for its outdoor recreational amenities including nearby hiking, fishing, golf and ski resorts as well as the native elk populations of the Cataloochee Valley. Property is flat with stream running along the Western border and ideal natural setting for employment. The county-owned site was acquired for economic development purposes on the US-276 corridor offering direct access via 4-lane, divided highway to I-40, 5-minute drive to commercial amenities of downtown Waynesville and 30-minute drive to downtown Asheville. 16 acre pad has been graded and elevated out of flood plain for shovel ready development with remainder of site available for uses including parking and employee amenities such as walking trails or landscaping buffer.

Location: 1585 Jonathan Creek Road, Waynesville, NC (Haywood County)

Zoning: Un-zoned

Use: Industrial Economic Development

Water: Town of Maggie Valley Sanitary District - adjacent

Sewer: Town of Maggie Valley Sanitary District - adjacent

Gas: NA

Power: Haywood Electrical Membership Corporation

Asking: Negotiable for Economic Development Projects

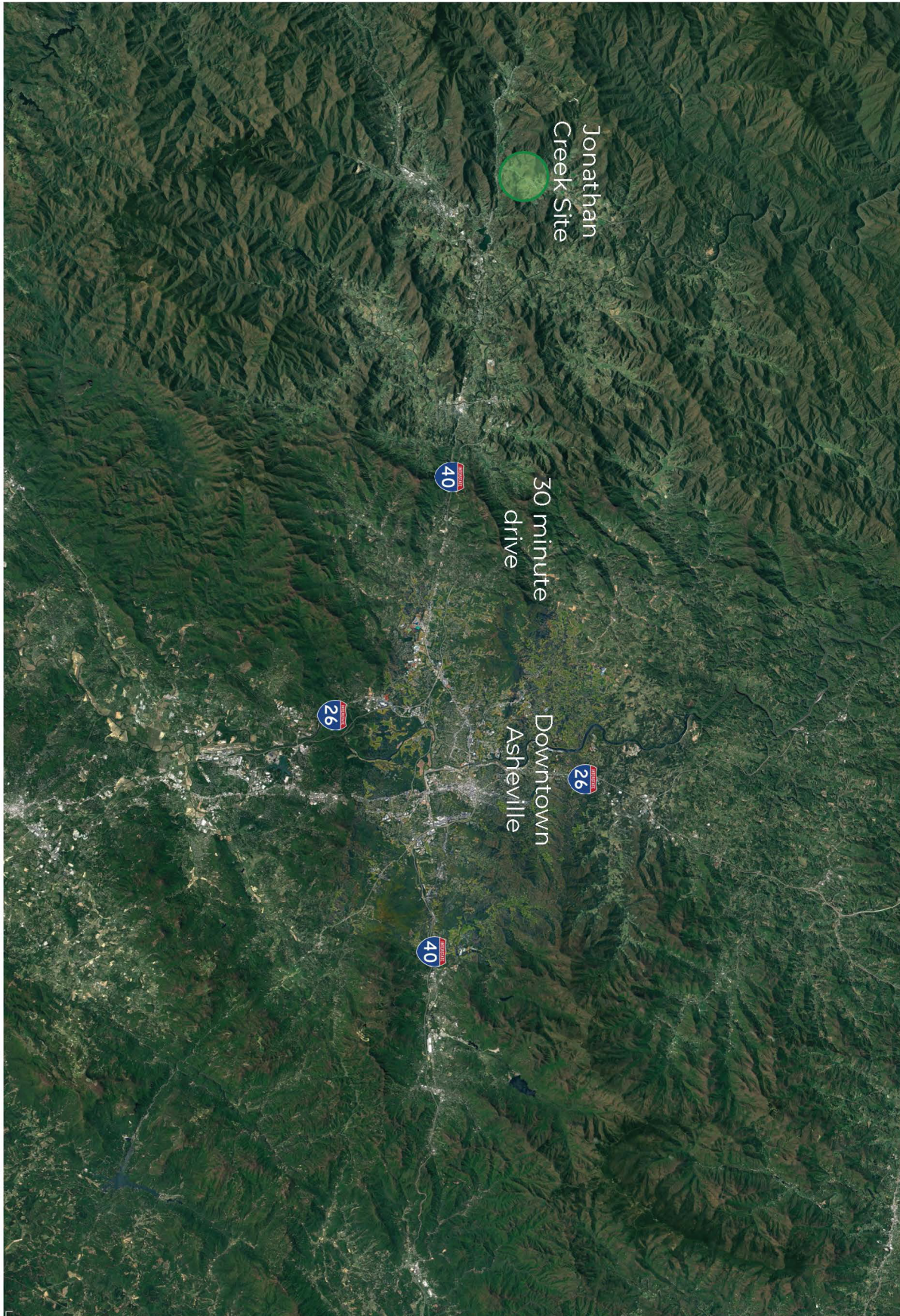
Picture to the right showcases access to the site



PLEASE CONTACT US

CLARK DUNCAN | Senior Vice President of Economic Development  
828.258.6134, cduncan@ashevillechamber.org

RYAN REGAN | Director of Business Development  
828.258.6130, rregan@ashevillechamber.org



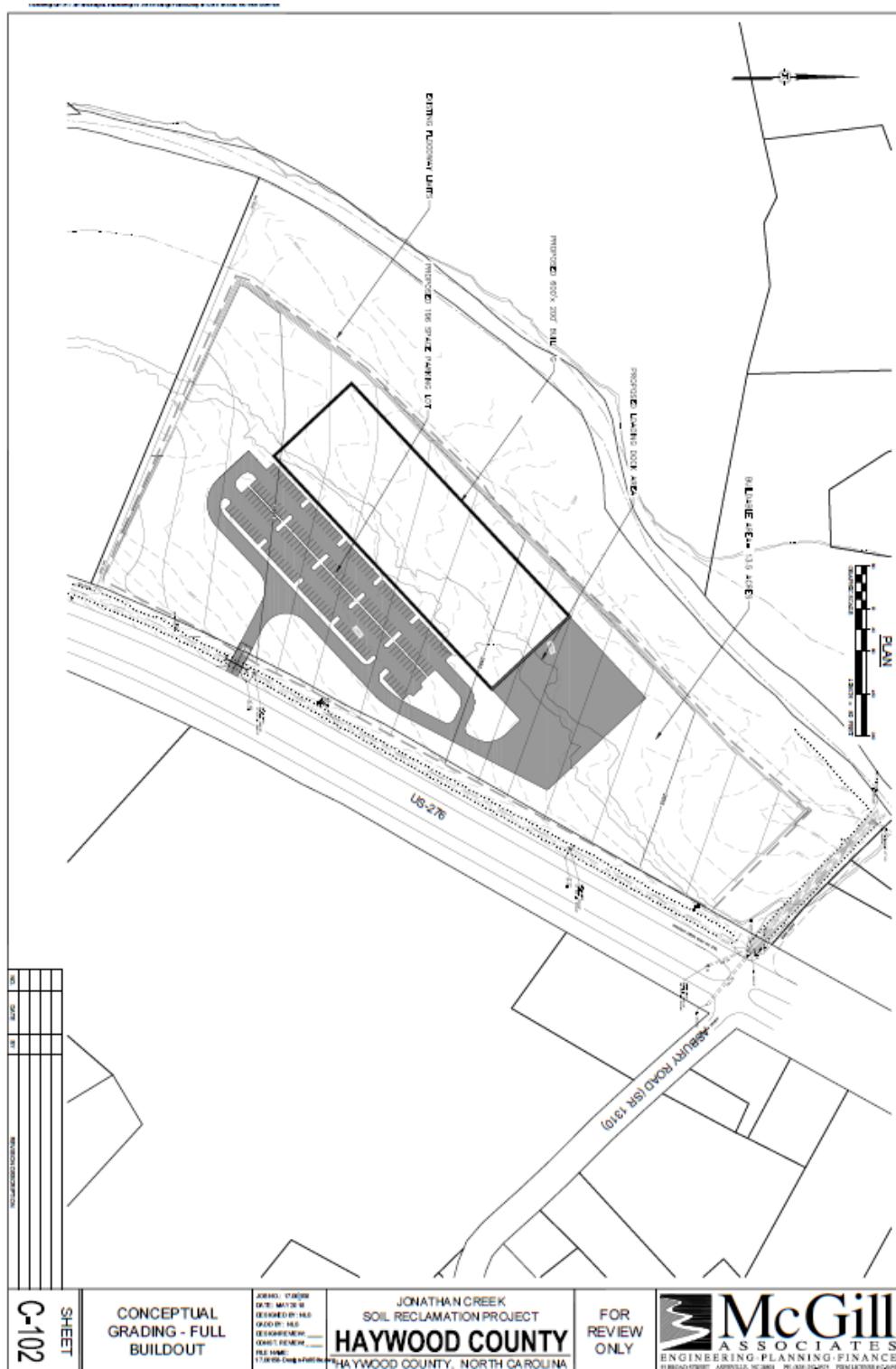
**PLEASE CONTACT US**

**CLARK DUNCAN** | Senior Vice President of Economic Development  
828.258.6134, [cduncan@ashevillechamber.org](mailto:cduncan@ashevillechamber.org)

**RYAN REGAN** | Director of Business Development  
828.258.6130, [rregan@ashevillechamber.org](mailto:rregan@ashevillechamber.org)

Topo Map / Site Plan

- Features 13.5 acre buildable area
- Concept demonstrates 120,000 Sq Ft. building - expandable to 240,000 Sq Ft. and 196-space parking lot pictured



PLEASE CONTACT US

CLARK DUNCAN | Senior Vice President of Economic Development  
828.258.6134, cduncan@ashevillechamber.org

RYAN REGAN | Director of Business Development  
828.258.6130, rregan@ashevillechamber.org